



# INSTRUCTION BULLETIN

No. 9008244  
Machine: S30  
Published: 06-2012  
Rev. 00

**NOTE: DO NOT DISCARD the Parts List from the Instruction Bulletin. Place the Parts List in the appropriate place in the machine manual for future reference. Retaining the Parts List will make it easier to reorder individual parts and will save the cost of ordering an entire kit.**

*NOTE: Numbers in parenthesis ( ) are reference numbers for parts listed in Bill of Materials.*

Installation instructions for **kit number 9008320**

## SYNOPSIS:

This kit contains the parts needed to repair the exhaust system on S30 diesel machines.  
Please follow step-by-step instructions.

## SPECIAL TOOLS / CONSIDERATIONS: NONE

(Estimated time to complete: 1 hour)



### PROTECT THE ENVIRONMENT

Please dispose of packaging materials, old machine components, and hazardous fluids in an environmentally safe manner according to local waste disposal regulations.

Always remember to recycle.

## PREPARATION:

1. Park the machine on a clean level surface, turn off the machine, remove the key, and set the parking brake.

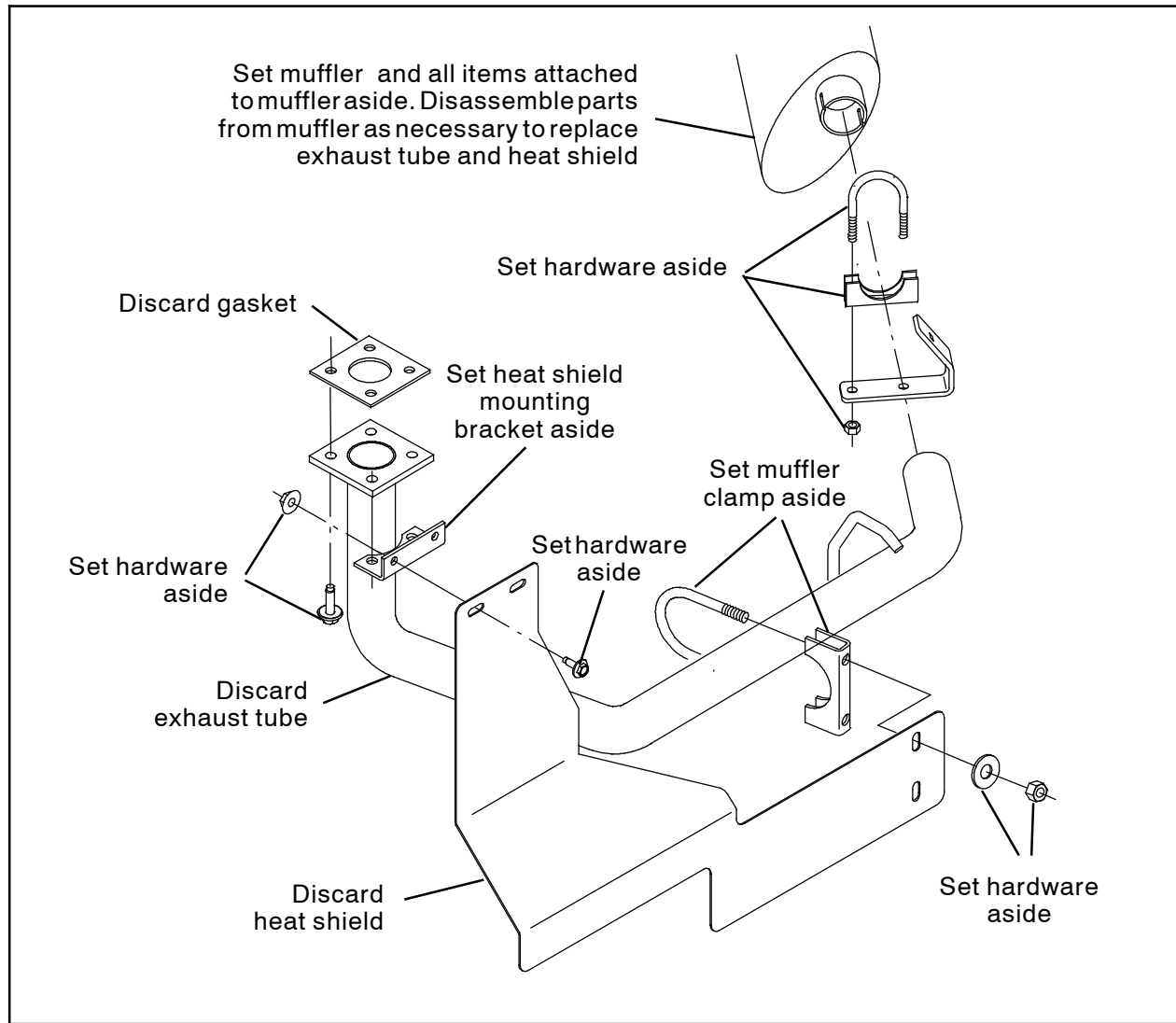
**FOR SAFETY: Before leaving or servicing machine, stop on level surface, turn off machine, remove key, set parking brake.**

2. Open both engine shrouds located at the back end of the machine to access the exhaust system.
3. Allow the exhaust system to cool if the machine has been recently operated.



**WARNING: Burn hazard. Hot surface. Do NOT touch.**

## INSTALLATION:



**FIG. 1**

1. Remove the existing exhaust tube, heat shield, and gasket from the machine. Discard the tube, shield, and gasket. Set all remaining removed components and hardware aside. (Fig. 1)
2. Use the saved hardware to install the new gasket (4) and new exhaust tube (1) onto the engine manifold. (Fig. 2)
3. Reinstall the muffler / hardware onto the machine and secure the other end of the new exhaust tube (1) into the muffler assembly. (Fig. 2)
4. Use the saved muffler clamp, heat shield mounting bracket, and hardware, the new muffler clamp (2) and two flat washers (5) to install the new heat shield (3) onto the exhaust tube (1). (Fig. 2)

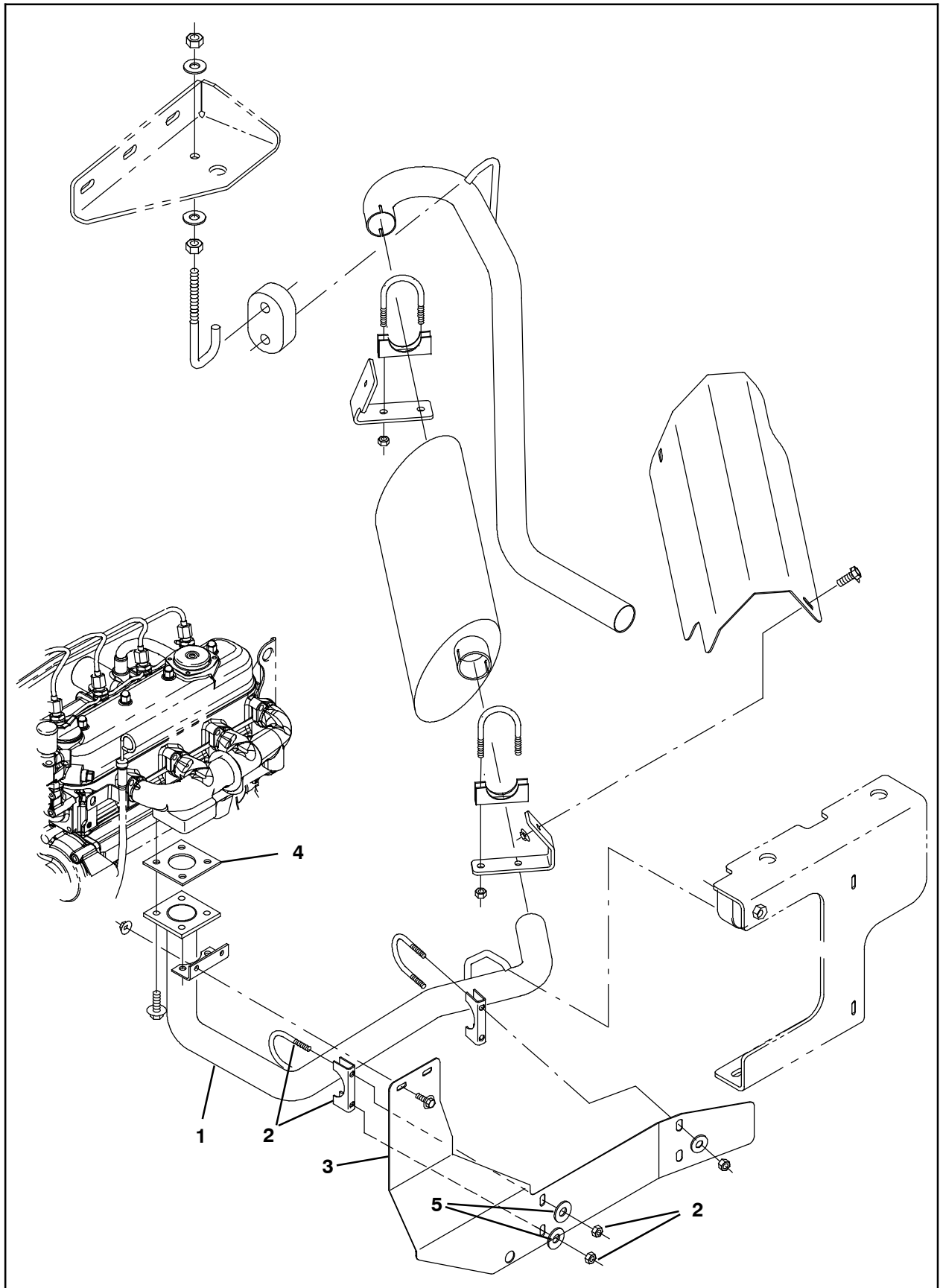


FIG. 2

---

**Bill Of Materials For Tube Kit, Exhaust, Repair, Dsl [S30] - 9008230**

---

	<b>Ref.</b>	<b>Tennant Part No.</b>	<b>Description</b>	<b>Qty.</b>
▽		9008230	Tube Kit, Exhaust, Repair, Dsl [S30]	1
▲	1	1059532	Tube Wldt, Exhaust, Dsl [Roto Cover]	1
▲	2	24012	Clamp, Muffler, 1.62D	1
▲	3	1060302	Shield, Heat, Exhaust, Dsl [Roto-Covers]	1
▲	4	51332	Gasket [KU]	1
▲	5	32491	Washer Flat, 0.31, Std	2

TENNANT COMPANY  
P. O. Box 1452  
Minneapolis, MN 55440-1452